



The Instructional Paradigm Shift

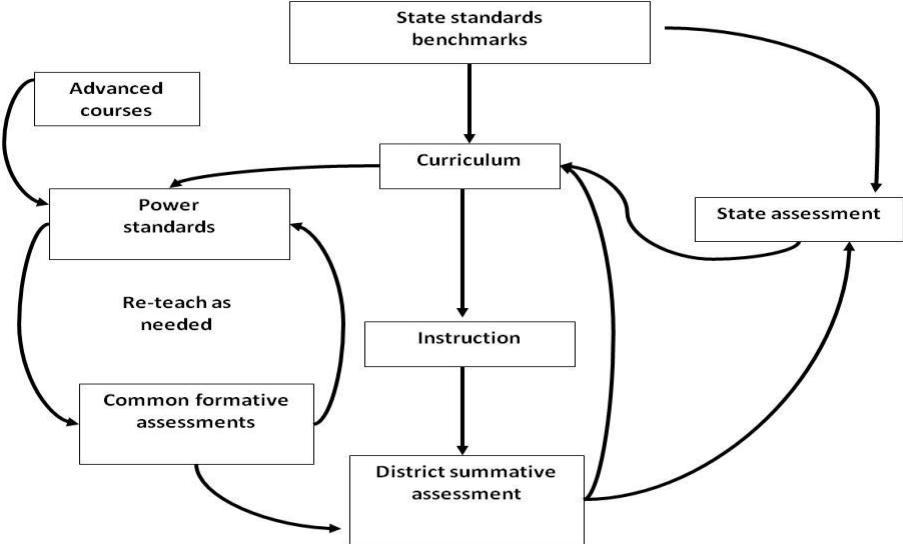
- **From teacher isolation**
To teacher collaboration
- **From time as the constant**
To student learning as the constant
- **From the focus on teaching**
To the focus on student learning

The Essential Questions



- **What do we want students to learn?**
- **How will we know when they learned it?**
- **What are we going to do when they don't learn it?**
- **What will we do when they already know it?**

Concurrent Processes

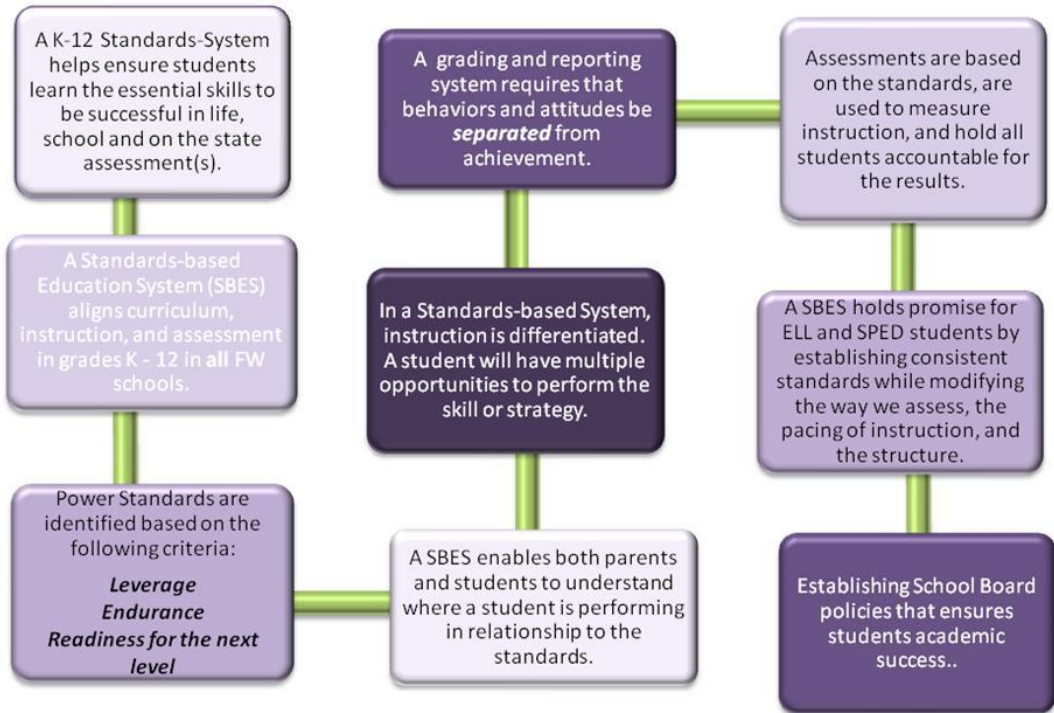




“Accountability systems that evaluate students without taking into account the actions of educators and leaders are about as useful as the health club whose only piece of equipment is a scale”

- Douglas Reeves

Guiding Principles for SBES Professional Development





An Accountability System Shift

What would a sustainable change model look like?

Efficient: No more than 15 standards per grade per subject and grades only reflect academic knowledge not behavior.

- Report PSAT/SAT/ACT/ Advance Program Participation and Scores



Comprehensive:

Reporting the Whole Child, Common Graduation Requirements, and Common Grading.

Constant: A K-12 grading and reporting system that ensures every student is College Eligible.